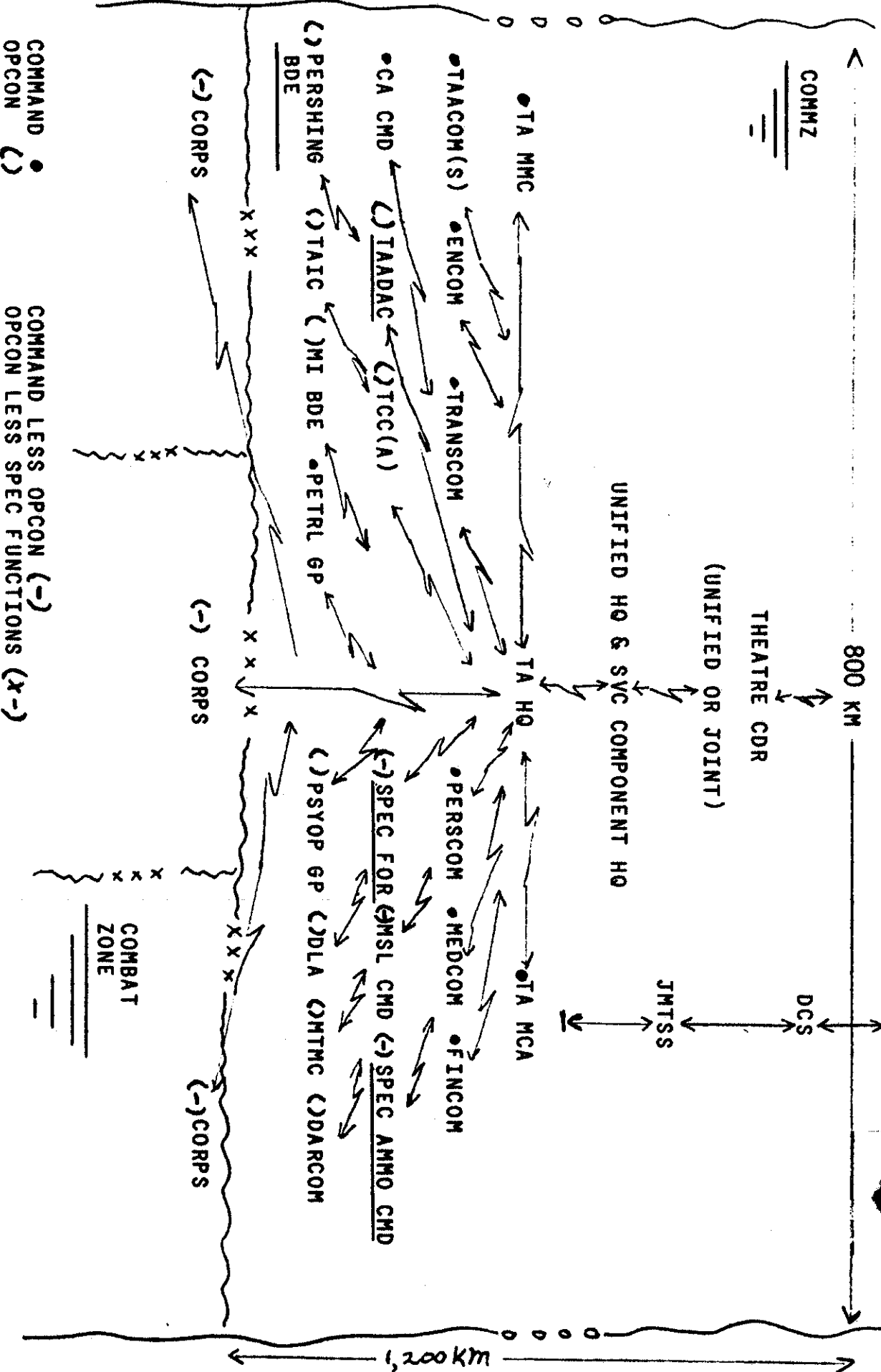


COMMUNICATIONS SUPPORT REQUIREMENTS
ECHELONS ABOVE CORPS
(COMSREAC)



8026

THEATRE SUBNET IN COMMZ



800 KM

1,200 km

COMMAND OPCON (●)
 COMMAND LESS OPCON (-)
 COMMAND LESS SPEC FUNCTIONS (X-)

COMBAT ZONE

UNCLASSIFIED

(U) PACOM ARMY MECR SURVEY

PURPOSE AND SCOPE



PURPOSE—CONDUCT SURVEY OF PACIFIC COMMAND ARMY MINIMUM ESSENTIAL COMMUNICATIONS REQUIREMENTS (MECR) FOR IN-THEATER AND TIME-PHASED FORCE DEPLOYMENT LIST (TPFD) ECHELONS ABOVE CORPS UNITS DURING THE TRANSITION FROM PEACETIME TO A PROTRACTED SIX-MONTH CONFLICT.

SCOPE—

- MECRs SUPPORT CRITICAL FUNCTIONS SUCH AS C², INTELLIGENCE, OPERATIONS, AND ADMINISTRATIVE—LOGISTICS CONTROL
- MECRs SUPPORT FOUR PACOM SCENARIOS (NE ASIA, NE PACIFIC, SE ASIA/SW PACIFIC, AND INDIAN OCEAN)
- FIVE SCENARIO SNAPSHOTS (D-DAY, D+30, D+60, D+90, AND D+180) WERE ADDRESSED
- VOICE, RECORD, DATA, FACSIMILE, VIDEO, AND POUCH REQUIREMENTS WERE ADDRESSED
- EAC FORCES DOWN TO AN INCLUDING BATTALION AND SEPARATE COMPANY-SIZE UNITS WERE IDENTIFIED
- MECRs WERE PROJECTED THROUGH THE 1985-1988 TIME FRAME
- INTERNAL KOREA REQUIREMENTS WERE EXCLUDED

3694A/BZW

(UNCLASSIFIED)

UNCLASSIFIED



PROGRAM SCENARIO: _____

ORIGINATING UNIT DATA:

USARPAC	TOE	GAINING COMMAND	REQUIRED DELIVERY DATE (RDD)	LOCATION IN THEATER	RELOCATION DATE/NEW LOCATION IN THEATER	POSTURE: SEC: REC: EVENT
USARPAC	TOAP1W0A0A	CINCPAC	D-DAY	FT. SHAFTER, HI	N/A	

RECEIVING DATA:

ORIGINATING UNIT STAFF SECTION	RECEIVING UNIT STAFF SECTION	RECEIVING UNIT HOMECLOSETURE	BEGIN DATE	END DATE	FUNCTION SUPPORTED	PRECEDENCE	SECURITY CLASSIFICATION	VOICE TRAFFIC VOLUME	PAGE TRAFFIC VOLUME	DATA TRAFFIC VOLUME	FAX TRAFFIC VOLUME	VIDEO TRAFFIC VOLUME	POUCH REQUIREMENT	AUTOMATED SYSTEM SUPPORTED	SUB USER/COMBIN WITH	RESTORATION PRIORITY
ADMIN OPERATIONS	---	MILPERCEM	D-DAY	---	PERS MGMT	ROUTINE	UNC	.1	---	850	---	---	---	---	---	3
SUPPLY	---	FORSCOM	D-DAY	---	OPERATIONS	PRIORITY	SEC	.2	---	400	---	---	---	---	---	2
COMVAND	---	LOG CONTROL	D-DAY	---	LOGISTICS	PRIORITY	CONF	.1	---	700	---	---	---	---	---	2
COMVAND	---	HQ, DA	D-DAY	---	C ²	FLASH	SEC	.3	15	---	---	---	---	---	---	1
COMVAND	---	EUSA	D-DAY	---	C ²	FLASH	SEC	1.5	10	850	2	---	YES	---	SU	1
PERSONNEL	---	EUSA	D-DAY	---	PERS MGMT	PRIORITY	UNC	.2	---	1000	---	---	---	---	---	2
INTELL-SUPPLY	---	EUSA	D-DAY	---	INTELL	FLASH	TS/SI	.3	15	500	5	---	YES	---	SU	1
COMVAND	---	EUSA	D-DAY	---	SUPPLY	PRIORITY	CONF	.2	---	1000	---	---	---	---	---	2
COMVAND	---	USARJ	D-DAY	---	C ²	FLASH	SEC	1.0	8	---	2	---	YES	---	SU	1
COMVAND	---	73 ^d INF BDE	D-DAY	---	C ²	FLASH	SEC	.8	7	---	---	---	---	---	SU	1
COMVAND	---	1 CORPS	D+39	---	C ²	FLASH	SEC	1.5	10	850	2	---	YES	---	SU	1
OPERATIONS	---	COMUSK	D-DAY	---	OPERATIONS	FLASH	SEC	.2	---	---	---	---	---	---	CU	1
OPERATIONS	---	COMUS J	D-DAY	---	OPERATIONS	FLASH	SEC	.1	---	---	---	---	---	---	CU	1

UNCLASSIFIED

(UNCLASSIFIED)

(U) Sample Data Collection Sheet

IMPACT OF ADP ON COMM SYS IN EAC



0 APPLICATION OF ADP TO PROBLEMS OF MANAGING INFO ON BATTLEFLD.

0 COMPILATION OF DATA SYS THAT WILL IMPACT ON THEATRE COMM SYS:

INTELLIGENCE

ASAS - ALL SOURCE ANALYSIS SYS

DODIIS - DOD ITEL INFO SYS

PERSONNEL/FINANCE

CUPID - COMD UNIQUE PERS INFO SYS

JUMPS - JOINT UNIFORM MIL PAY SYS

SIDPERS - STD INSTAL/DIV PER SYS

STANFINS - STD AR FINANCIAL SYS

TAPERS - THEATER AR PERS ROLLUP SYS

LOGISTICS

ACS - ASSET CONTROL SYS

DAMMS - DEP OF AR MOVEM'T SYS

DASPS - DEPT OF AR STD PORT SYS

DS4 - DIRECT SPT UNIT STD SUPPLY SYS

SAAS - STD AR AMMO SYS

SAIIS - STD AR INTERMED LVL SUP SYS

SAMS - STD AR MAINT SYS

WARS - WORLD WIDE AMMO RPT'NG SYS

ENGINEERING

AMPRS - AUTOMT'D MIL PROGRESS RPT'NG SYS

COEMIS - CORPS OF ENGRS MIS

PAX - PACIFIC AREA EXCHANGE

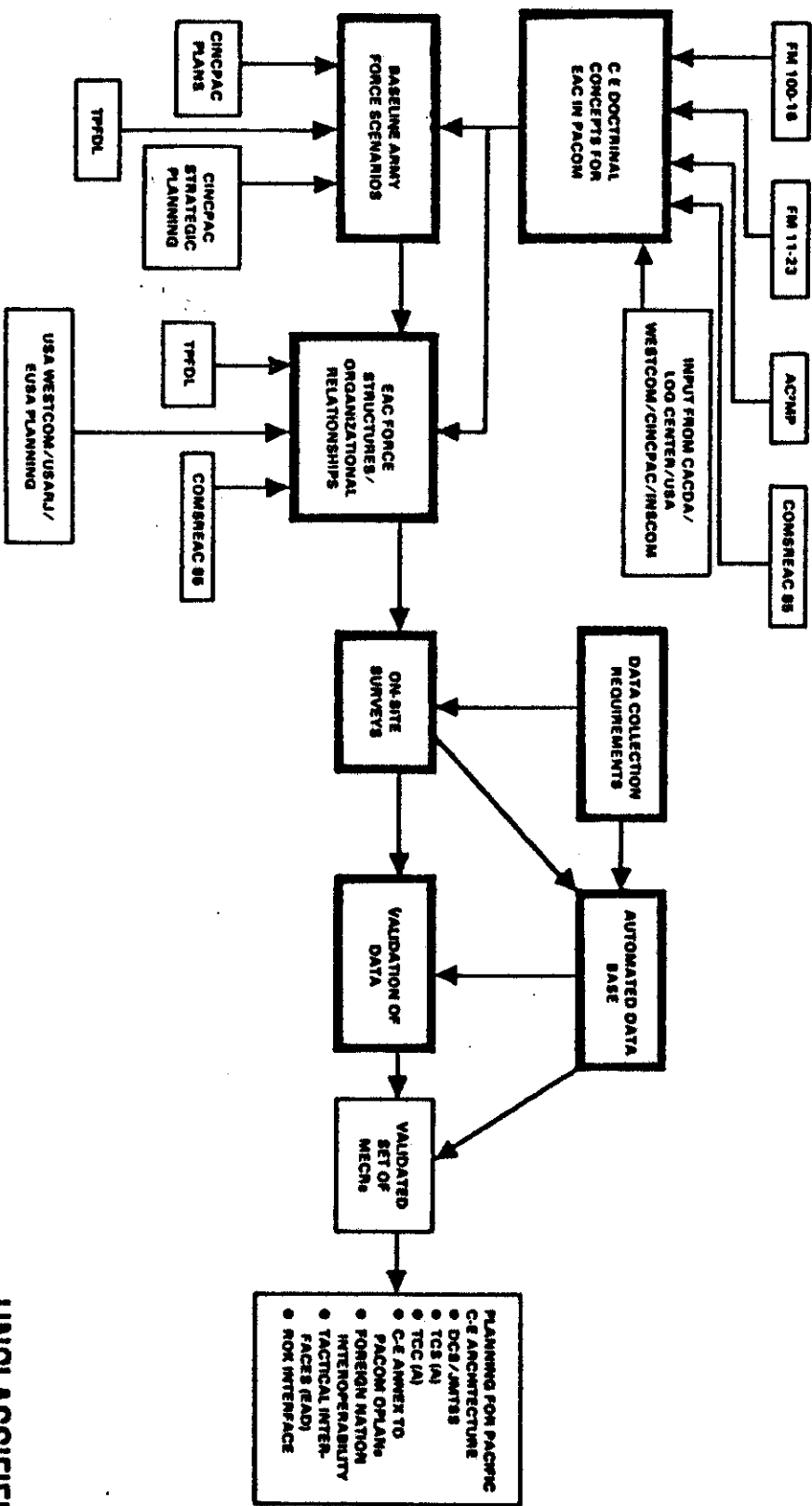
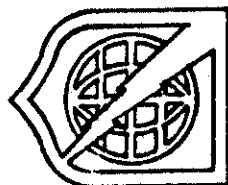
MEDICAL

TANMIS - THEATRE AR MED MIS

UNCLASSIFIED

(U) PACCOM ARMY MECR SURVEY

(U) OVERVIEW OF PACCOM ARMY MECR SURVEY METHODOLOGY



(UNCLASSIFIED)

UNCLASSIFIED



CONCLUSION

- 0 PACOM ARMY MECR SURVEY-ESSENTIAL FIRST STEP BY USACC IN DEV C-E ARCHITECTURE FOR EAC IN PACIFIC THEATRE.
- 0 PLANNING EFFORTS WILL RESULT IN REALISTIC/ACHIEVABLE TCC (A)/TCS(A) FOR THIS THEATRE THAT CAN SPT MOST LIKELY PACOM SCENARIOS/FORCE DEPLOYMENTS