

by Glenn Rice, UNCL/CTE, A CoS, CS, CRS,  
HQ UN/CFC, Attn: CFCF-Po-R,  
APO. SF. 96301.

FOI.  
WOTF 1-7-8  
7433<sup>b</sup> XXI

1986.

## CFC COMMAND RELATIONSHIPS ORIENTATION

THIS BRIEFING WILL PROVIDE YOU WITH A BASIC UNDERSTANDING OF THE COMMAND RELATIONSHIPS EXISTING BETWEEN THE UNITED NATIONS COMMAND AND THE COMBINED FORCES COMMAND HEREAFTER PREFERRED TO AS "UNC" AND "CFC". IT WILL ENCOMPASS THE SOURCES OF NATIONAL LEVEL GUIDANCE AND DIRECTION; CHANNELS OF COMMUNICATIONS; MISSION; FUNCTIONS; ORGANIZATION; AND CFC'S COMMAND RELATIONSHIPS WITH OTHER MAJOR COMMANDS.

WHEN ACTING AS CINCUNC, GENERAL LIVSEY HAS DIFFERENT RELATIONSHIPS WITH THE US, THE UN AND WITH CFC THAN WHEN HE ACTS AS CINCCFC.

AS CINCUNC, GENERAL LIVSEY RECEIVES HIS STRATEGIC GUIDANCE AND DIRECTION ONLY FROM THE US JCS, WHICH ACTS AS THE IN-HOUSE ADMINISTRATIVE AGENT FOR THE US NATIONAL COMMAND AUTHORITY (NCA). THE US NCA, WAS DESIGNATED BY THE UNITED NATIONS IN 1950 AS THE MILITARY EXECUTIVE AGENT FOR THE UN IN KOREA.

ALSO, AS CINCUNC GENERAL LIVSEY STILL HAS THE RESPONSIBILITY FOR CARRYING OUT THE UN MANDATE OF MAINTAINING THE TERMS OF THE MILITARY ARMISTICE AGREEMENT, ASSISTED BY THE UNC MILITARY ARMISTICE COMMISSION, AND ITS SECRETARIAT (UNCMACSEC). IT IS AS CINCCFC, HOWEVER, THAT HE HAS THE MISSION OF ACTUALLY DEFENDING THE ROK.

THIRD, IN HIS RELATIONSHIP TO CFC, GENERAL LIVSEY, AS CINCUNC, HAS DIRECTIVE AUTHORITY OVER CINCCFC FOR ARMISTICE MATTERS. THIS INCLUDES THE AUTHORITY TO REQUEST COMBAT FORCES, WHEN NECESSARY. THIS AUTHORITY WAS GIVEN TO CINCUNC BY THE ROK AND US BECAUSE CINCUNC NO LONGER HAS DAY-TO-DAY OPERATIONAL CONTROL OF ROK MILITARY FORCES. THE ONLY ARMISTICE PERIOD FORCE CINCUNC HAS IS THE SMALL UNC SUPPORT GROUP - JOINT SECURITY AREA FORCE JUST SOUTH OF THE DMZ.

IN ORDER TO PROVIDE CINCUNC WITH COMBAT FORCES TO MAINTAIN THE ARMISTICE, THE ROK AND US TERMS OF REFERENCE PROVIDES CINCUNC WITH THIS DIRECTIVE AUTHORITY OVER CFC, AND THE AUTHORITY TO REQUEST CFC COMBAT FORCES, WHEN NECESSARY. SEE SLIDE 1.

WHEN ACTING AS CINCUNC GENERAL LIVSEY'S CHANNEL OF COMMUNICATIONS ARE DIFFERENT FROM HIS CHANNELS OF COMMUNICATIONS AS CINCCFC. AS CINCUNC, HE COMMUNICATES DIRECTLY WITH THE UN EXECUTIVE AGENT, THE US NCA, FOR UNC PLANNING, STRATEGIC GUIDANCE AND DIRECTION, AND FOR THE CONDUCT OF COMBAT OPERATIONS. HE COMMUNICATES WITH CINCPAC FOR ADMINISTRATION AND LOGISTICS SUPPORT. SEE SLIDE 2.

TURNING NOW TO CFC, THE FOLLOWING SERIES OF SLIDES WILL EXPLAIN THE BINATIONAL STRUCTURE FOR THE CONTROL OF CFC, BEGINNING WITH A NEW ACRONYM.

THE ACRONYM "NCMA" I.E. "NATIONAL COMMAND AND MILITARY AUTHORITY" REPLACES THE TERM "NCA" IN THE CONTEXT OF CFC.

THE NCMA WAS SPECIFICALLY CREATED FOR CFC. IT RESULTS FROM ADDING EACH COUNTRY'S JOINT CHIEFS OF STAFF TO EACH OF THE TWO NCAS WHICH ARE, RESPECTIVELY THE US PRESIDENT AND SECRETARY OF DEFENSE AND THE ROK PRESIDENT AND THE MINISTER OF NATIONAL DEFENSE. THIS STRUCTURE ALLOWS THE US TO PRESENT A PARALLEL, DECISION MAKING BODY TO THE ROK.

THE NCMA'S OF BOTH THE ROK AND US PROVIDE STRATEGIC GUIDANCE AND DIRECTION TO A BODY CALLED THE "ROK-US MILITARY COMMITTEE". THE MILITARY COMMITTEE IS COMPOSED OF TWO SESSIONS, A PLENARY AND A PERMANENT SESSION.

THE PLENARY SESSION MEETS ONLY ONCE PER YEAR IN CONJUNCTION WITH THE ANNUAL ROK-US "SECURITY CONSULTATIVE MEETING".

THE FIVE MEMBERS SHOWN HERE ARE EVENLY DIVIDED BETWEEN THE TWO ROK REPRESENTATIVES (THE CHAIRMAN OF THE ROK JCS PLUS ONE OTHER ROK REPRESENTATIVE)

THE TWO US REPRESENTATIVES (THE CHAIRMAN OF THE US JCS AND USCINCPAC) AND THE FIFTH MEMBER, CINCCFC, REPRESENTING THE COMBINED INTERESTS OF BOTH NATIONS.

SINCE THE PLENARY SESSION MEETS ONLY ONCE EACH YEAR, DAILY AUTHORITY OVER CFC IS ASSUMED BY THE PERMANENT SESSION OF THE MILITARY COMMITTEE.

THE CHAIRMAN OF THE ROK JCS IS THE ROK MEMBER, GENERAL LIVSEY ALSO HAS A SEAT IN THE PERMANENT SESSION AS THE SENIOR US MILITARY OFFICER ASSIGNED TO KOREA. WHILE WEARING THIS HAT, HE REPRESENTS PURELY US INTEREST.

THE CHANNEL OF COMMUNICATIONS USED BY THE TWO PERMANENT SESSION MEMBERS TO THEIR RESPECTIVE NCMAS ARE SHOWN HERE. SEE SLIDE 3.

THE CHANNEL OF COMMUNICATIONS BETWEEN THE ROK AUTHORITY AND THE ROK PERMANENT SESSION MEMBER IS SIMPLE. FOR THE US, GENERAL LIVSEY COMMUNICATES DIRECTLY WITH THE US JCS (PART OF THE US NCMA), KEEPING USCINCPAC INFORMED.

WHEN THE SUBJECT INVOLVES US FORCES ALONE, HE COMMUNICATES TO THE US JCS THROUGH USCINCPAC.

THE ROK-US MILITARY COMMITTEE WAS GIVEN THE MISSION OF PROVIDING OPERATIONAL GUIDANCE AND STRATEGIC DIRECTION TO CINCCFC.

IN ADDITION TO THIS MISSION, THE MILITARY COMMITTEE HAS FIVE FUNCTIONS:

FIRST, TO DEVELOP AND TRANSMIT STRATEGIC DIRECTION AND MISSIONS TO CINCCFC FROM THE ROK AND US NCMAS, OR FROM THE ANNUAL ROK/US SECURITY CONSULTATIVE MEETING (SCM).

SECOND, TO PROVIDE A CHANNEL OF COMMUNICATION BETWEEN THE TWO NCMAS AND CINCCFC.

THE THIRD FUNCTION IS TO RESPOND TO THE GUIDANCE OF THE ROK AND US NCMAS FOR URGENT MATTERS.

FOURTH IS TO MAKE RECOMMENDATIONS TO NCMAS CONCERNING THE MILITARY FORCES UNDER THE OPERATIONAL CONTROL OF CINCCFC:

FINALLY, THE MILITARY COMMITTEE PROVIDES APPROPRIATE SUPPORT FOR THE STRATEGIC PLANS OF THE NCMAS OF BOTH COUNTRIES:

THE NEXT SLIDE CLEARLY SHOWS THESE RELATIONSHIPS BETWEEN CINCCFC, THE MILITARY COMMITTEE AND THE ROK AND US NATIONAL COMMAND AND MILITARY AUTHORITIES: SEE SLIDE 4:

EACH NATION PROVIDES STRATEGIC GUIDANCE AND DIRECTION TO THE MILITARY COMMITTEE WHICH, IN TURNS, PASSES IT ON TO CINCCFC:

THIS CHART ALSO CLEARLY SHOWS THAT, WHEN WEARING HIS CINCCFC HAT, GENERAL LIVSEY DOES NOT REPORT DIRECTLY TO ANY SINGLE US OR ROK AUTHORITY, BUT RATHER TO THIS BINATIONAL COMMITTEE:

THERE ARE TWO FUNDAMENTAL BINATIONAL DOCUMENTS WHICH COMPRISE THE CHARTERS OF THE ROK-US COMBINED FORCES COMMAND. THESE ARE: THE "TERMS OF REFERENCE", APPROVED BY THE ROK AND US NCMA'S FOR THE ESTABLISHMENT OF CFC, AND SECONDLY, "STRATEGIC DIRECTIVE NO. 1" WHICH WAS PROMULGATED BY THE FIRST MEETING OF THE ROK-US MILITARY COMMITTEE, PLENARY SESSION, IN JULY 1978.

TOGETHER, THESE DOCUMENTS PRESCRIBE THE MISSION, FUNCTIONS, ORGANIZATION, AND OPERATIONS OF CFC, AND CFC'S RELATIONSHIPS WITH OTHER HEADQUARTERS:

#### MISSION & FUNCTIONS

THE MISSION OF CFC IS VERY SIMPLE: IT IS TO DETER ACTS OF EXTERNAL AGGRESSION AGAINST THE REPUBLIC OF KOREA, AND, IF DETERRENCE FAILS, TO DEFEAT AN ARMED ATTACK:

IN ADDITION TO THIS MISSION, TEN FUNCTIONS WERE ASSIGNED TO CINCCFC BY THE TWO COUNTRIES:

1. CFC RECEIVES ITS STRATEGIC DIRECTION AND ITS MISSIONS FROM THE ROK-US MILITARY COMMITTEE.
  2. CINCCFC EXERCISES OPERATIONAL CONTROL OVER DESIGNATED ROK AND US FORCES.
  3. CINCCFC IS ALSO RESPONSIBLE FOR MAKING RECOMMENDATIONS TO THE MILITARY COMMITTEE.
  4. THIS COMMAND PLANS AND CONDUCTS SEVERAL COMBINED EXERCISES EACH YEAR: TEAM SPIRIT AND ULCHI-FOCUS LENS ARE EXAMPLES.
  5. PREPARES CONTINGENCY PLANS.
  6. CINCCFC PROVIDES COMBINED INTELLIGENCE SUPPORT FOR THE MISSION OF DEFENDING THE REPUBLIC OF KOREA.
  7. CFC RECOMMENDS THE EQUIPPING OF CFC FORCES. IT DOES NOT HAVE THE FUNCTION OF ACTUALLY PROVIDING SUPPLIES OR MATERIAL; THIS IS A NATIONAL RESPONSIBILITY.
  8. CINCCFC IS RESPONSIBLE FOR COMPLYING WITH THE ARMISTICE DIRECTIVES OF CINCUNC.
  9. CINCCFC IS RESPONSIBLE FOR SUPPORTING CINCUNC WITH COMBAT FORCES, IF NECESSARY.
  10. FINALLY, CINCCFC DEVELOPS STRATEGIC AND TACTICAL CONCEPTS. THE ORGANIZATION OF THE COMBINED STAFF IS SHOWN NEXT. SEE SLIDE 5: BEGINNING WITH THE COMMAND GROUP, US ARMY GENERAL LIVSEY IS THE COMMANDER-IN-CHIEF OF CFC; THE DEPUTY IS ROK ARMY GENERAL HAN. US AIR FORCE MG GENERAL CALLAGHAN IS CHIEF OF STAFF, AND THE DEPUTY CHIEF OF STAFF IS ROK ARMY MAJ GENERAL LEE.
- THESE ARE THE SEVEN COMBINED STAFF DIRECTORATES AS SHOWN.
- THE SPECIAL STAFF CONSISTS OF THE SECRETARY OF THE COMBINED STAFF, THE PUBLIC AFFAIRS OFFICER, THE JUDGE ADVOCATE, THE OPERATIONS ANALYSIS GROUP, AND

• THE HEADQUARTERS COMMANDANT:

ONE OF THE FUNDAMENTAL PRINCIPLES OF THE COMBINED STAFF IS THAT THE CHIEF AND THE DEPUTY SHALL NOT BE FROM THE SAME COUNTRY. AS ILLUSTRATED HERE THIS ALTERNATION OF KOREAN AND AMERICAN STAFF CHIEFS HOLDS TRUE OF ALL FUNCTIONS DOWN THROUGH THE BRANCH CHIEF LEVEL:

ANOTHER UNIQUE FEATURE IS THE DUAL-HATTING OF CFC STAFF OFFICERS AS MEMBERS OF THE USFK STAFF. THIS IS SHOWN HERE BY SHADING THE UPPER RIGHT CORNER OF THE BOX. IN ADDITION THE US ARMY OFFICERS SHOWN HERE ARE ALSO MEMBERS OF THE EIGHTH US ARMY STAFF:

FINALLY, THE CINC HAS DESIGNATED SEVERAL MEMBERS OF THE COORDINATING AND PERSONAL STAFF AS THE UNC STAFF. THE CFC OFFICERS SO DESIGNATED ARE AUTHORIZED TO CALL ON THE SERVICES OF THE REST OF THEIR CFC STAFF TO WORK ON UNC ACTIONS. THE MEMBERS OF THE UNC STAFF ARE NOT APPOINTED AS THE UNC C-2, C-3, C-4, ETC, BUT ARE TREATED AS A POOL OF EXPERTS AVAILABLE TO CINCUNC FOR UNC ACTIONS. SEE SLIDE 6:

THIS SLIDE IS PERHAPS ONE OF THE MOST IMPORTANT SLIDES IN THIS BRIEFING. IT SHOWS THE RELATIONSHIPS OF THE THREE MAJOR COMMANDS (UNC, CFC AND USFK) AND THEIR COMPONENT COMMANDS:

NOTE THAT THE THREE COMPONENT COMMANDS OF THE UNC ARE DEPICTED IN SLASHED LINES. THIS IS BECAUSE THESE COMPONENTS NO LONGER HAVE ANY FORCES. THESE FORCES WERE CHOPPED TO THE GROUND COMPONENT COMMAND, NAVAL COMPONENT COMMAND AND AIR COMPONENT COMMAND OF CFC ON 7 NOVEMBER 1978.

THE CFC COMPONENTS, IN TURN, ARE SUPPORTED BY THE THREE COMPONENT COMMANDS OF US FORCES KOREA. THESE ARE: EIGHTH US ARMY, US NAVAL FORCES KOREA, AND US AIR FORCES KOREA.

ALTHOUGH THERE ARE TWELVE DIFFERENT COMMANDS DEPICTED ON THIS CHART, THERE ARE ONLY FOUR COMMANDERS. THEY ARE: GEN LIVSEY SERVING AS CINCUNC, CINCCFC,

COMMANDER OF US FORCES KOREA; COMMANDER OF THE GROUND COMPONENT COMMANDS OF UNC AND CFC AND COMMANDER OF EIGHTH US ARMY. (NOT SHOWN IS THE POSITION OF SENIOR U.S. MILITARY OFFICER ASSIGNED IN KOREA - THE SEVENTH HAT)

SINCE THE CFC GROUND COMPONENT COMMANDER'S POSITION IS DUAL-HATTED BY CINCCFC, THE DEPUTY'S POSITION IS ALSO DUAL-HATTED BY THE DEPUTY CINCCFC.

FURTHER, ALL MEMBERS OF THE CFC STAFF, REGARDLESS OF NATIONALITY OR BRANCH OF SERVICE, ARE DUAL-HATTED AS THE GROUND COMPONENT STAFF.

IN THE NAVAL AREA THE SAME OFFICER DOES NOT COMMAND ALL THREE COMPONENTS; CFC'S NAVAL COMPONENT IS COMMAND BY ROK VICE ADMIRAL CHUNG, WHO ALSO COMMANDS THE ROK NAVAL OPERATIONAL COMMAND BASED AT CHINHAE. HIS DEPUTY IS US NAVY REAR ADMIRAL HORNE WHO ALSO COMMANDS THE UNC NAVAL COMPONENT AND IS THE COMMANDER OF US NAVAL FORCES KOREA.

USAF LT GENERAL GREGORY COMMANDS THE AIR COMPONENT COMMAND CFC. HE IS ALSO DUAL-HATTED AS COMMANDER UNC AIR COMPONENT, US AIR FORCES KOREA AND AS DEPUTY CINCUNC AND DEPUTY COMMANDER OF US FORCES KOREA.

THE CFC AIR COMPONENT DEPUTY COMMANDER'S POSITION IS DUAL-HATTED BY THE COMMANDER OF THE ROK AIR FORCE'S "COMBAT AIR COMMAND" AT OSAN, LT GENERAL SUH. LT GENERAL GREGORY ALSO COMMANDS THE USAF 7TH AIR FORCE LOCATED AT OSAN AB.

IN ADDITION TO THE COMPONENT COMMANDS SHOWN, OTHER OPTIONS ARE AVAILABLE TO THE CINCCFC DURING WARTIME. HE HAS THE OPTION OF ACTIVATING THE "CUWTF", THE "COMBINED UNCONVENTIONAL WARFARE TASK FORCE". WITH THE APPROVAL OF THE ROK NCMA, THE ROK ARMY'S "SPECIAL WARFARE COMMAND" PROVIDES THE CDR, CADRE AND MOST OF THE FORCES OF THIS UW COMMAND, AUGMENTED BY ROK NAVAL SPECIAL WARFARE AND ROK ARMY AND AIR FORCE AVIATION ASSETS. *studies of this capability.*

AUGMENTATION BY US ARMY SPECIAL FORCES, US AIR FORCE SPECIAL OPERATIONS AND US NAVAL SPECIAL WARFARE ELEMENTS DEPENDS UPON APPROVAL OF THE US NCMA.

OTHER OPTIONS AVAILABLE TO CINCCFC ARE TO ORGANIZE EITHER JOINT, COMBINED, OR UNI-SERVICE TASK FORCES FOR SPECIFIC MISSIONS. ADDITIONALLY, UPON ITS ARRIVAL A US MARINE CORPS UNI-SERVICE FORCE, USMARFORK, IS EMPLOYED AS A SEPARATE MAJOR SUBORDINATE HEADQUARTERS UNDER CFC FOR ALL BUT AMPHIBIOUS OPERATIONS. SEE SLIDE 7.

TO SUMMARIZE, DURING THE ARMISTICE, AS CINCCFC, GENERAL LIVSEY HAS OPERATIONAL CONTROL OF DESIGNATED ROK AND US COMBAT FORCES IN KOREA WITH THE MISSION OF DEFENDING THE ROK.

AS CINCCFC, HE RECEIVES STRATEGIC GUIDANCE AND DIRECTION FROM BOTH THE ROK AND US NCMA'S THROUGH THE ROK/US MILITARY COMMITTEE.

AS CINCUNC HE RECEIVES STRATEGIC GUIDANCE AND DIRECTION FROM THE US NCA.

AS CINCUNC, GENERAL LIVSEY EMPLOYS THE UNCMAC SECRETARIAT TO CONTROL THE UNC-JOINT SECURITY AREA AND ASSIST HIM IN MAINTAINING THE ARMISTICE.

USPACOM AND THE ROK SERVICE HQ SUPPORT CINCUNC/CINCCFC.

AS COMUSK, USCINCPAC'S SUBORDINATE UNIFIED COMMANDER FOR KOREA, GENERAL LIVSEY PROVIDES SUPPORT AND COORDINATION TO UNC/CFC TO INCLUDE PROVIDING US COMBAT AND COMBAT SUPPORT FORCES TO CFC, UPON THEIR ARRIVAL AND AFTER APPROVAL OF THE US NCMA. SEE SLIDE 8.

IN WARTIME:

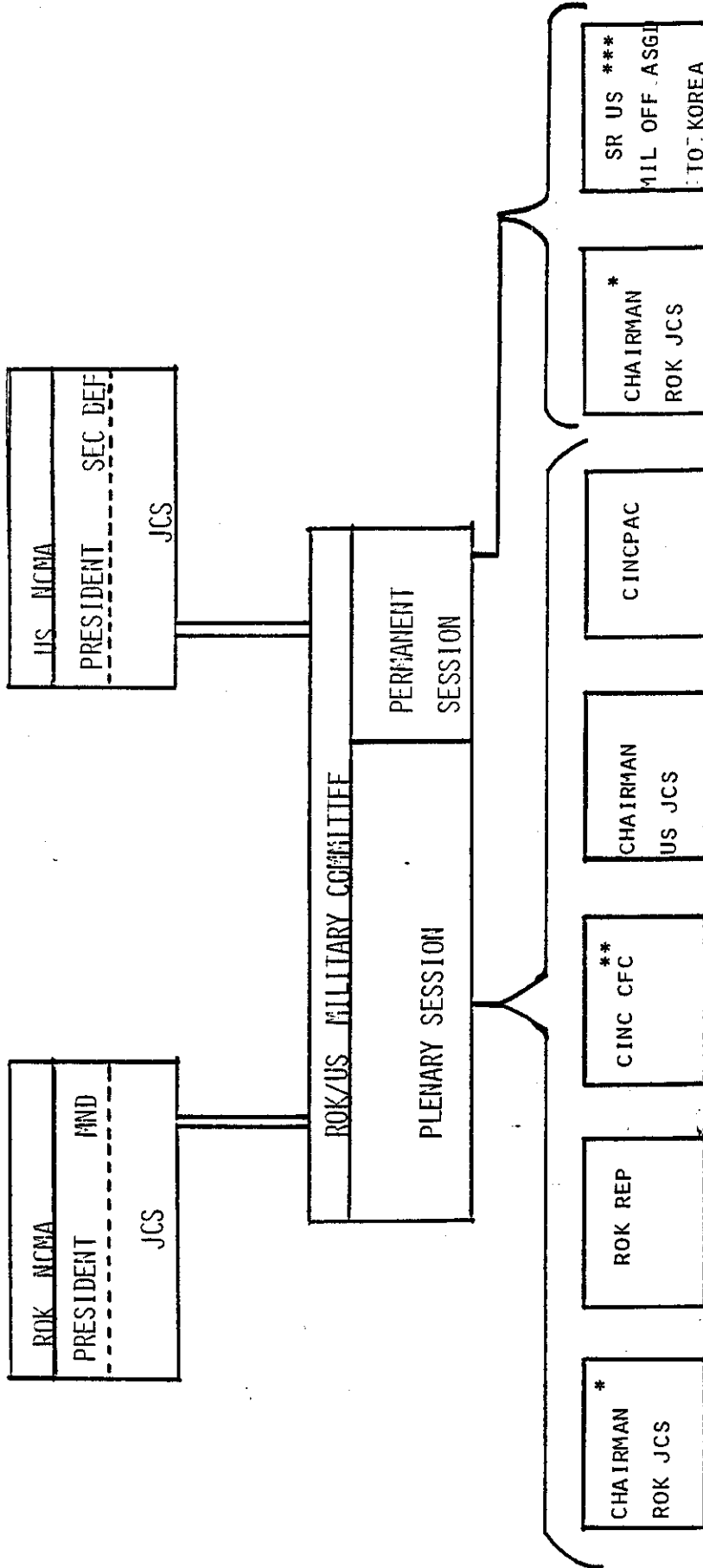
THE 7TH FLEET COMBAT LIAISON ELEMENT COORDINATES US NAVAL OPERATION WITH CINCCFC.

3D NATION/UN FORCES COME UNDER THE OPCON OF CINCUNC AND COORDINATE OPERATIONS WITH CINCCFC.

CINCCFC HAS THE OPTIONS OF ACTIVATING THE CUWTF, WITH ROK NCMA APPROVAL, AND TO ORGANIZE EITHER JOINT, COMBINED OR UNI-SERVICE TASK FORCES, AS WELL AS EMPLOYING USMARFORK. END.



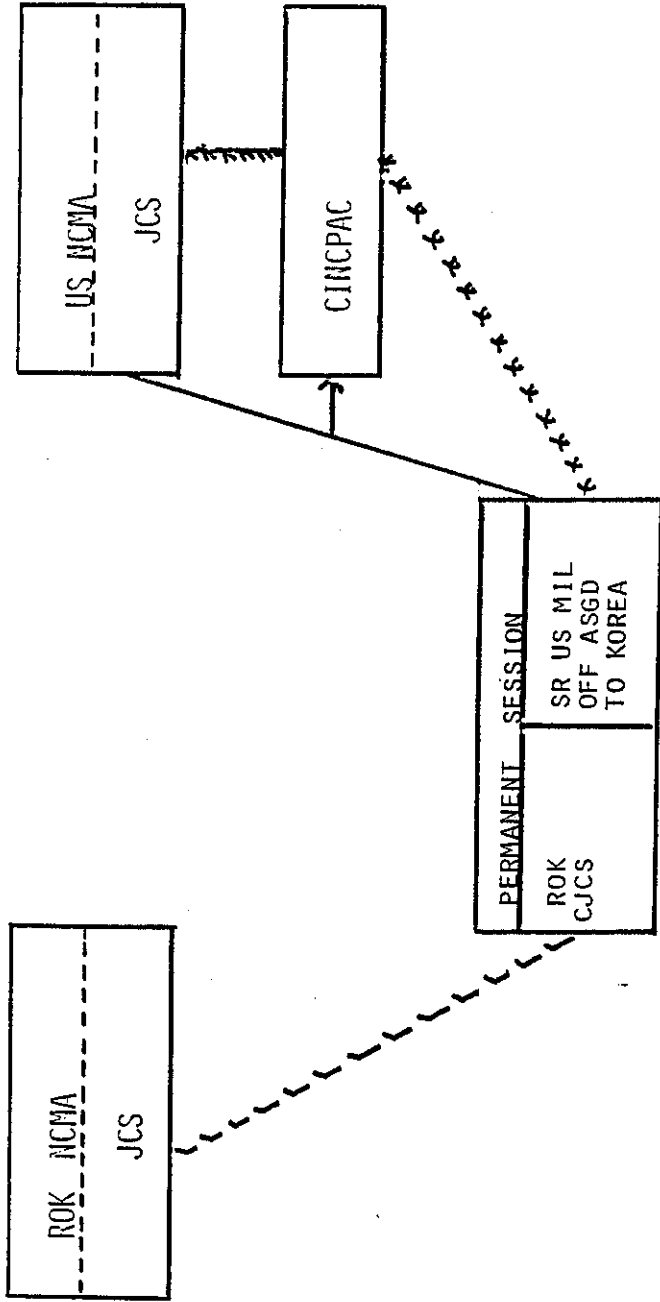
NATIONAL COMMAND AND MILITARY AUTHORITY



\_\_\_\_\_ STRATEGIC GUIDANCE AND DIRECTION  
 \_\_\_\_\_ COMPOSED OF:

- \* SAME INDIVIDUAL - REPRESENTS ROK
- \*\* CINCCFC - REPRESENTS BINATIONAL INTERESTS
- \*\*\* SR US OFF - REPRESENTS US INTERESTS

COMMUNICATIONS CHANNELS

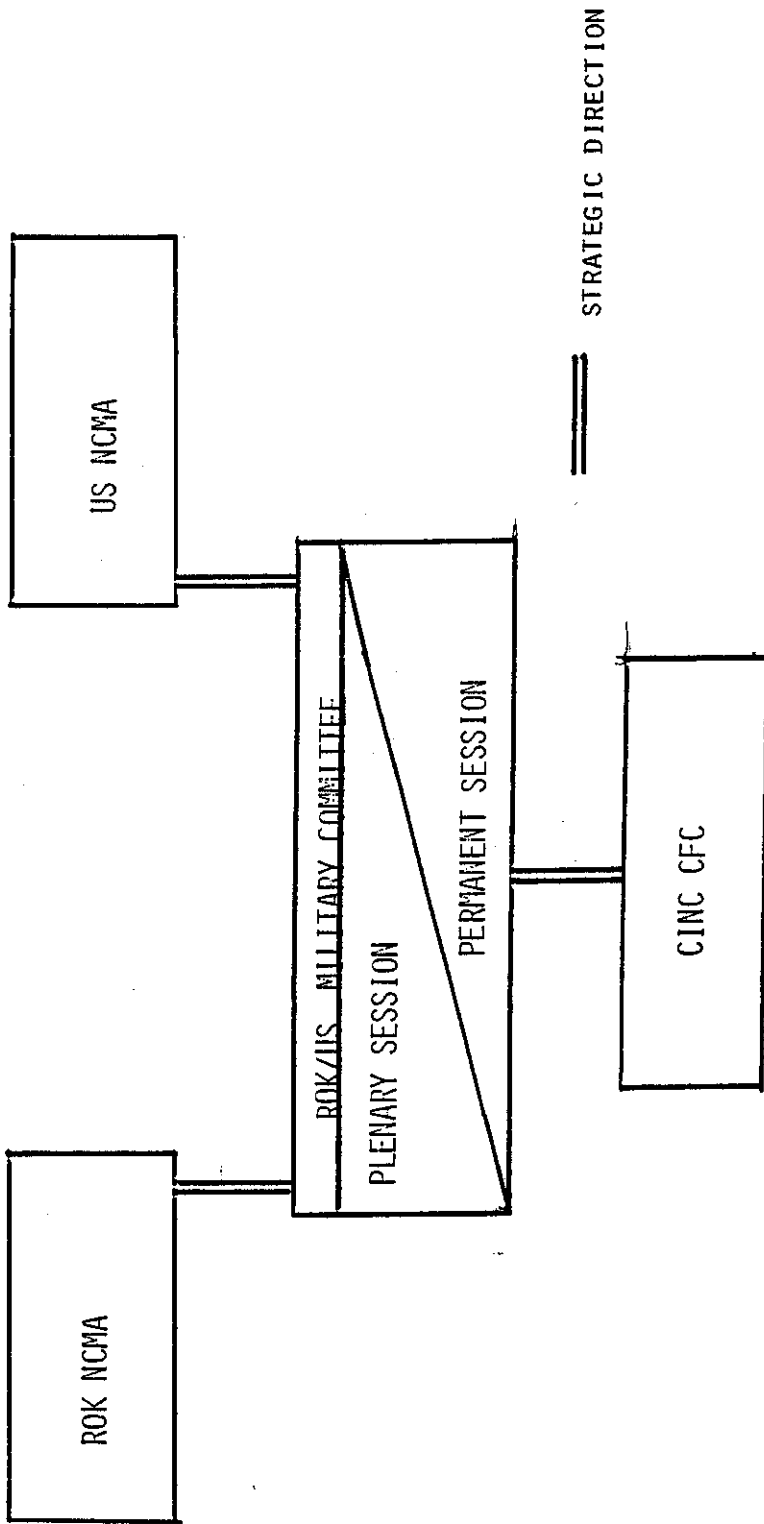


LLLL ROK COMMUNICATIONS CHANNEL

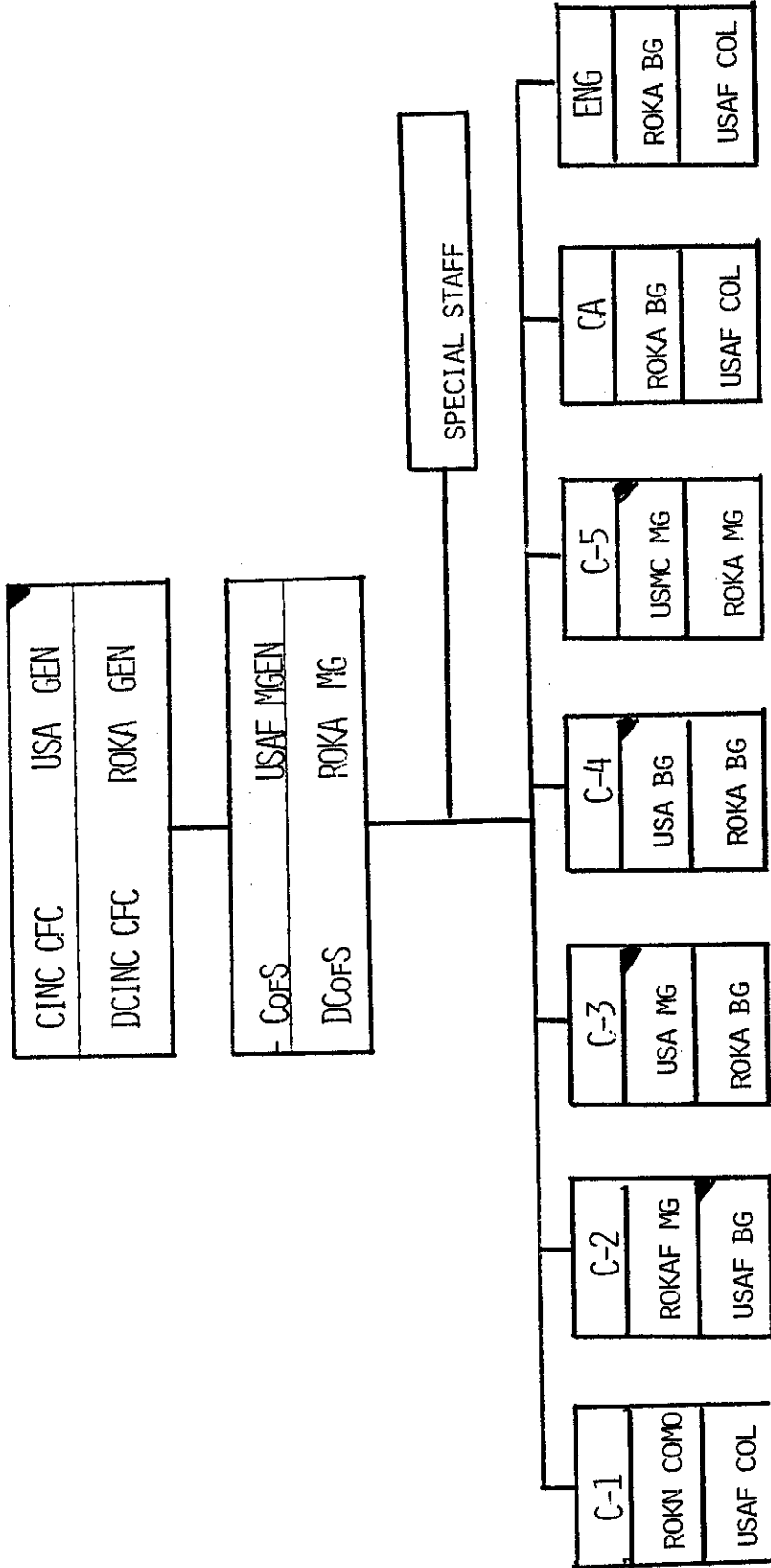
— US CHANNEL FOR ALL BINATIONAL MATTERS; INFORMATION TO CINCPAC

XXXXX US CHANNELS FOR MATTERS CONCERNING US FORCES ONLY

CINC CFC STRATEGIC GUIDANCE

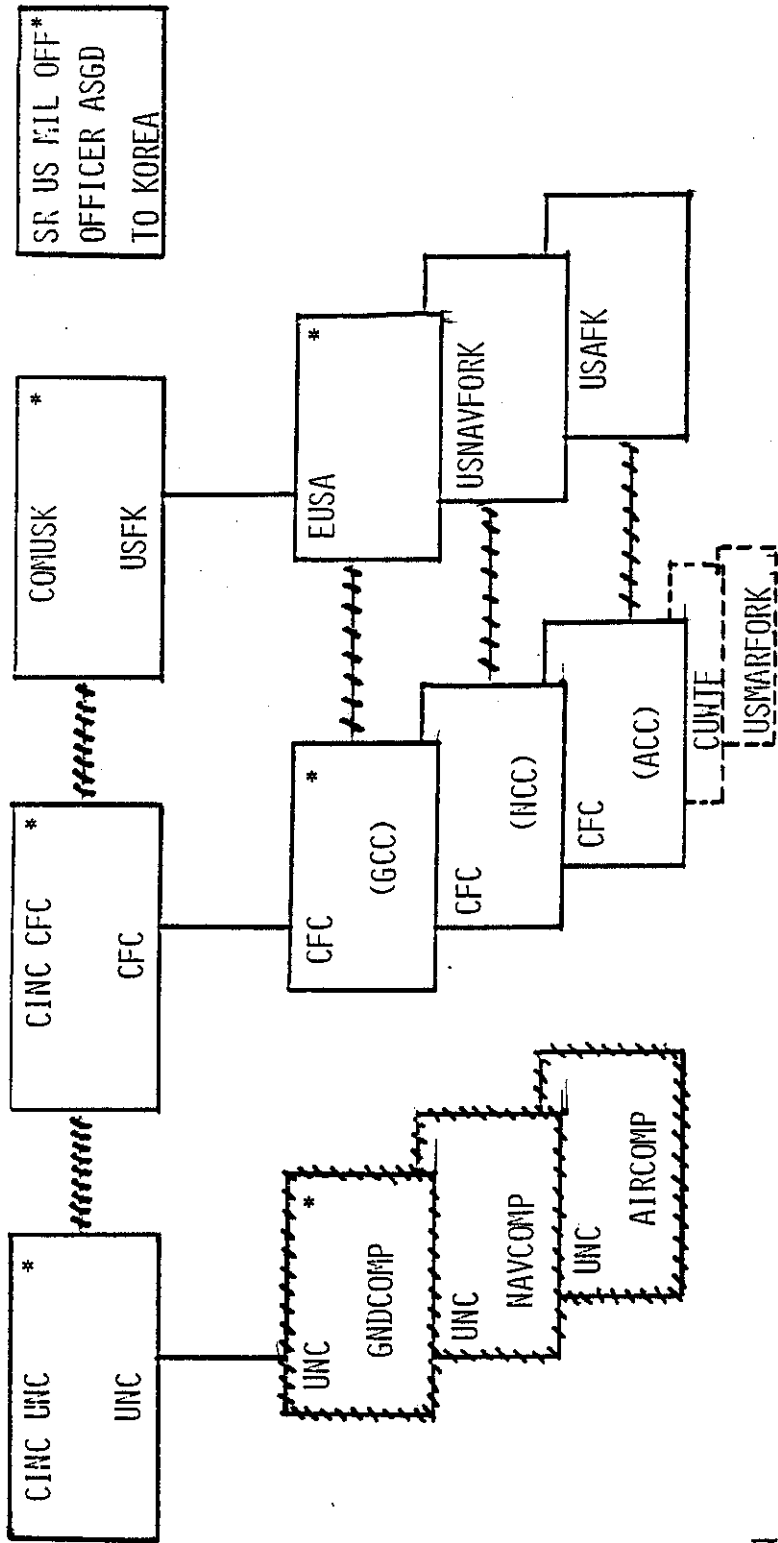


COMMAND AND STAFF - CFC



ALSO DUAL-HATTED AS USFK STAFF PRINCIPAL

MAJOR COMMANDS AND COMPONENT COMMANDS



SR US MIL OFF\*  
OFFICER ASGD  
TO KOREA

— OPCON

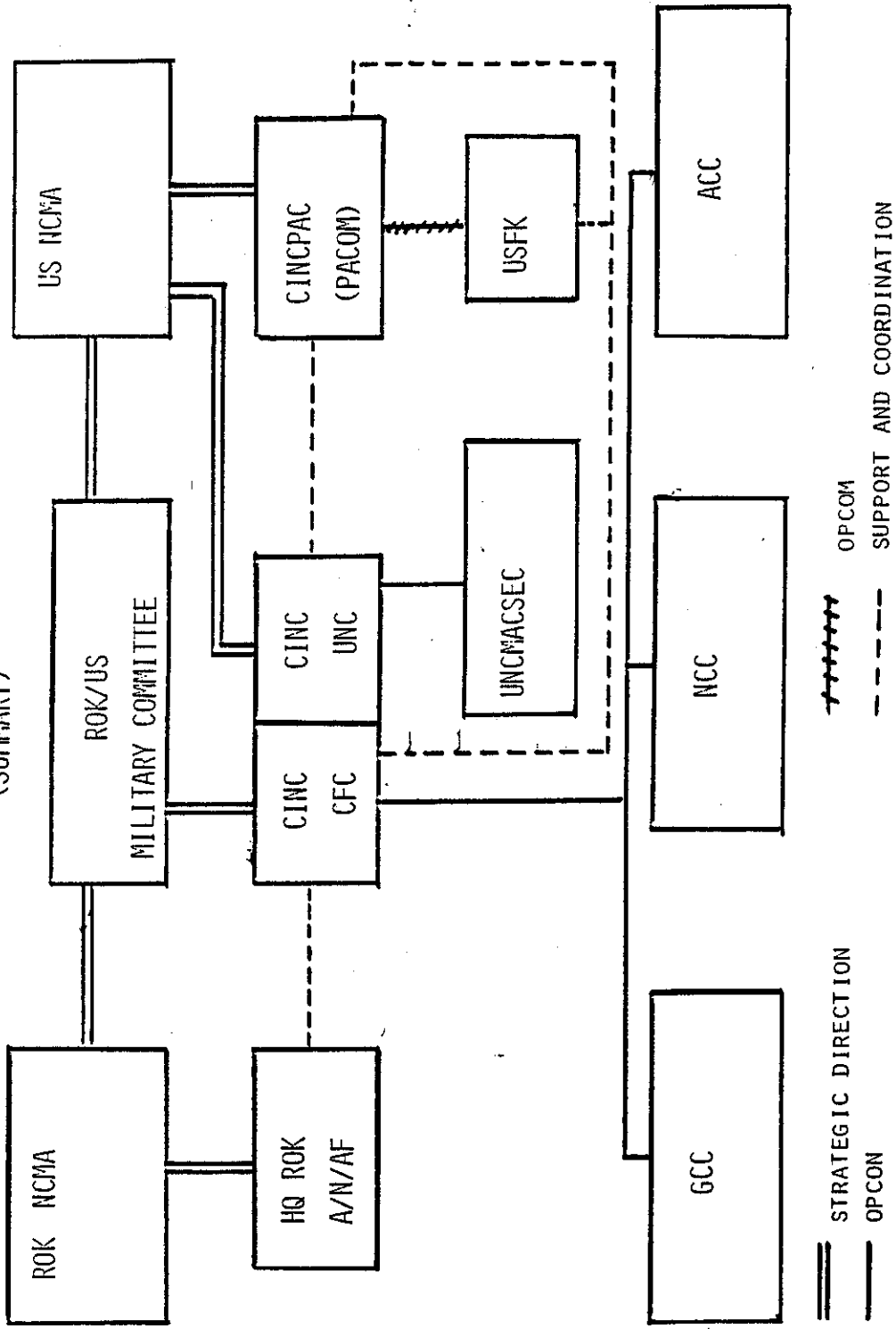
----- SUPPORT & COORDINATION

----- WARTIME OPTIONS

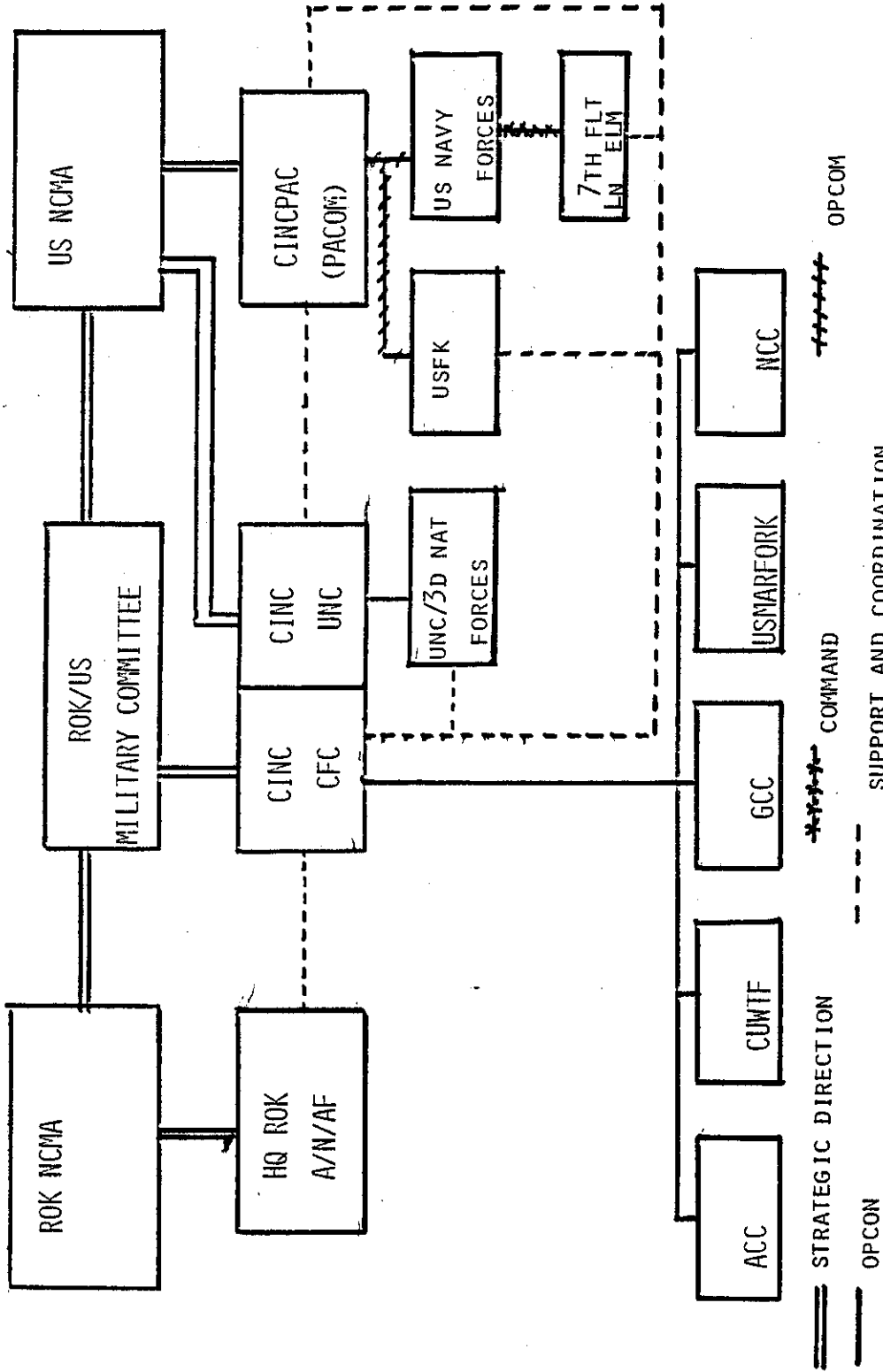
\* GEN LIVSEY'S SEVEN "HATS"

PEACETIME CFC COMMAND RELATIONSHIPS

(SUMMARY)

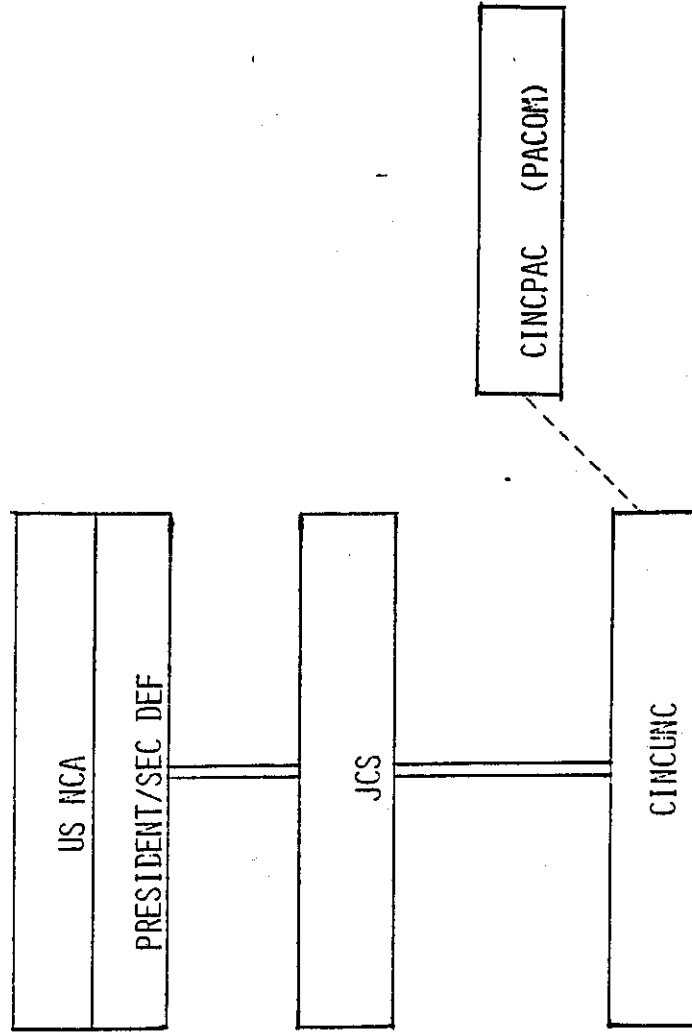


WARTIME CFC COMMAND RELATIONSHIPS  
(SUMMARY)



STRATEGIC DIRECTION  
OPCON  
COMMAND  
SUPPORT AND COORDINATION  
SLIDE 8

CINC UNC CHANNELS OF COMMUNICATIONS



==== FOR PLANNING, STRATEGIC GUIDANCE & DIRECTION, CONDUCT OF COMBAT OPERATIONS

- - - - - FOR ADMINISTRATION & LOGISTIC SUPPORT