

Darwin - port

Recommended Citation

"Darwin - port", Australian Defence Facilities, September 25, 2013, <https://nautilus.org/briefing-books/australian-defence-facilities/darwin-port/>

Introduction

Australian navy and visiting foreign navy ships normally berth at Fort Hill Wharf or occasionally at East Arm Wharf.

See also

- [US ship visits to Darwin](#)
- [Log of US Navy ship visits to Darwin, 2000 - 2014](#) (updated 1 April 2014)

LOCATION:

[Fort Hill Wharf](#): 12°28'18"S 130°50'44"E

[East Arm Wharf](#): 12°29'S 130°52'E

[Port of Darwin, Fact Sheet No.1](#), Darwin Port Corporation

The Port of Darwin, located at latitude 12° 28'S, longitude 130° 50'E, on the southern shore of the Beagle Gulf in the Timor Sea, encompasses approximately 1,000km² of open water, with deep shipping channels. A line between Charles Point and Lee Point defines the seaward boundary of the port.

A naturally occurring deep water port with world class facilities and services, the Port of Darwin is strategically positioned at the 'top end' of Australia, making it the closest port to SE Asia and 'Australia's northern gateway of choice'.

A multi-modal hub, the Port comprises Stokes Hill Wharf, Fort Hill Wharf, Frances Bay Marina, Fisherman's Wharf and East Arm Wharf which is located 13.5kms by road from the Darwin CBD and is the Port's main working facility. It has both road and rail access and utilises modern materials handling equipment to efficiently move 4,577,000 tonnes of cargo annually.

Vessels drawing 11m can enter the Port in all tidal conditions. Drafts over 11m may be accepted with prior consultation and may need to wait for appropriate tidal conditions before entering the harbour. Vessels up to 246 LOA and 12.83m draft have been accepted to the port. Middle Pass, the channel through Charles Point Patches at the entrance to Darwin Harbour has a depth of 12.2m.

EAW Expansion Project DEIS

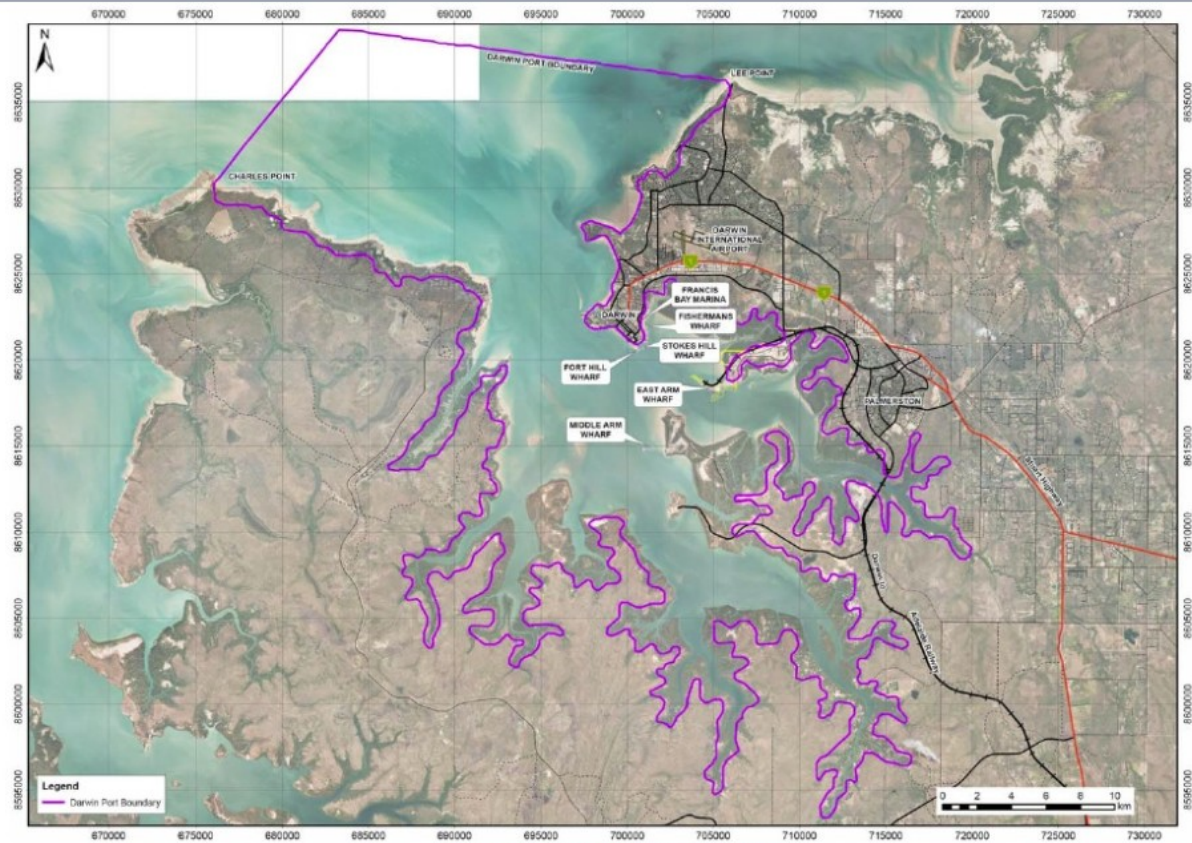


Figure 5-2 Darwin Harbour Port facilities

Northern Territory
Government

Project coordinator: Richard Tanter
Updated: 1 April 2014

View this online at: <https://nautilus.org/briefing-books/australian-defence-facilities/darwin-port/>

Nautilus Institute
608 San Miguel Ave., Berkeley, CA 94707-1535 | Phone: (510) 423-0372 | Email:
nautilus@nautilus.org